

## ...High Performance Round Slings!

Code	Color	Working Load Limit lbs.					Approx. Diameter In.	Approx. Weight / ft pounds
		Vertical	Choker	Basket 90°	Basket 60°	Basket 45°		
SSA200	Blue	20,000	16,000	40,000	34,600	28,000	1 1/4	0.55
SSA250	Blue	25,000	20,000	50,000	43,200	35,000	1 1/4	0.65
SSA300	Blue	30,000	24,000	60,000	51,900	42,000	1 3/8	0.80
SSA400	Blue	40,000	32,000	80,000	69,200	56,000	1 3/4	1.10
SSA500	Blue	50,000	40,000	100,000	86,500	70,000	1 7/8	1.50
SSA600	Blue	60,000	48,000	120,000	103,800	84,000	2	1.60
SSA700	Blue	70,000	56,000	140,000	121,100	98,000	2 1/8	1.65
SSA850	Blue	85,000	68,000	170,000	147,000	119,000	2 1/2	1.85
SSA1000	Blue	100,000	80,000	200,000	173,000	140,000	2 3/4	2.20
SSA1250	Blue	125,000	100,000	250,000	216,200	175,000	3	3.00
SSA1500	Blue	150,000	120,000	300,000	259,500	210,000	3 1/4	3.35
SSA1750	Blue	175,000	140,000	350,000	302,700	245,000	3 1/2	4.00
SSA2000	Blue	200,000	160,000	400,000	346,000	280,000	3 3/4	4.35
SSA2250	Blue	225,000	180,000	450,000	389,700	318,000	5	5.00
SSA2500	Blue	250,000	200,000	500,000	433,000	353,000	5 1/2	5.85
SSA2750	Blue	275,000	220,000	550,000	476,300	388,000	6	6.50
SSA3000	Blue	300,000	240,000	600,000	519,600	424,000	6 1/2	7.15
SSA4000	Blue	400,000	320,000	800,000	692,800	565,600	7	7.00
SSA5000	Blue	500,000	400,000	1,000,000	866,000	707,000	8	8.50
SSA6000	Blue	600,000	480,000	1,200,000	1,039,200	848,400	9	10.00

Safety Factor 5:1

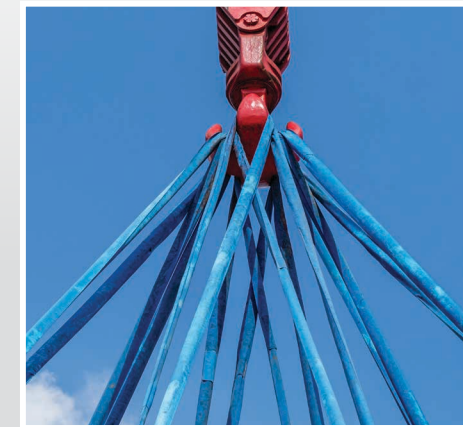
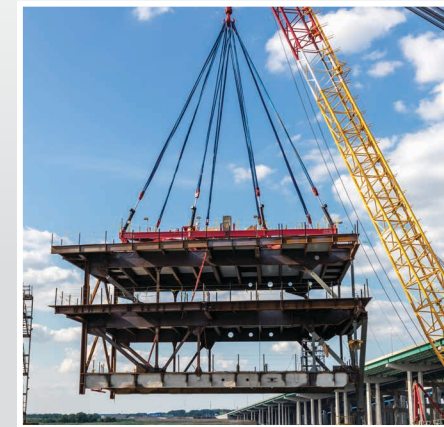
Elongation at WLL	1%
Melting Range	144-152°C
Density	Floats
Moisture Retention	1%
Yarn Abrasion Resistance	Excellent (yarn on yarn)
Cover Abrasion Resistance	Excellent
UV Resistance	Very Good
Loss Strength when wet	0%



# Super Slinger

High Performance Round Slings

Building the world, one lift at a time!



99234 OCTOBER 2016



[www.ben-mor.com](http://www.ben-mor.com)

[info@ben-mor.com](mailto:info@ben-mor.com)

1 800 423-4423

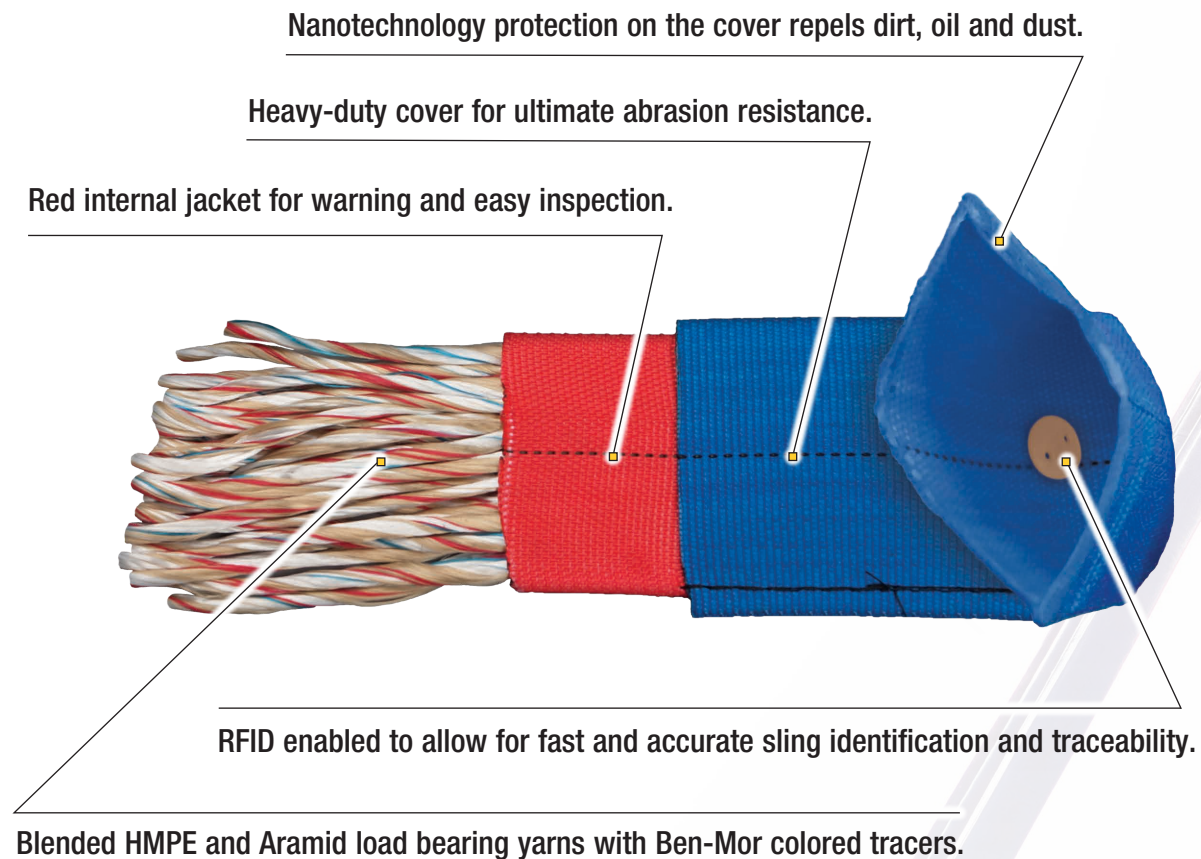




# Heavy Lifting... Light Slings!

## Super Slings can be 15 times lighter than steel

- Reduce the amount of manpower needed for the job.
- Reduce the time it takes to do the lift.
- Super Slings weigh less than 16% of what a wire rope sling would weigh.



## First ever round sling with Nanotechnology applied on the cover



### Durable protective function

Due to the extremely high level of abrasion resistance, the Nano covers protective function is retained even with heavy-duty use, frequent washing or cleaning.

### Naturally Self-cleaning

Oil, dirt and dust do not adhere to the Nano surface and can be rinsed off with water.

# Rely on full inspection

## Prevent delays! Save money!

Pre-failure warnings on slings often present a false alarm, when in fact the sling is ok to use. Prevent delays with your lift, and save money with inspection costs by using Super Slings.

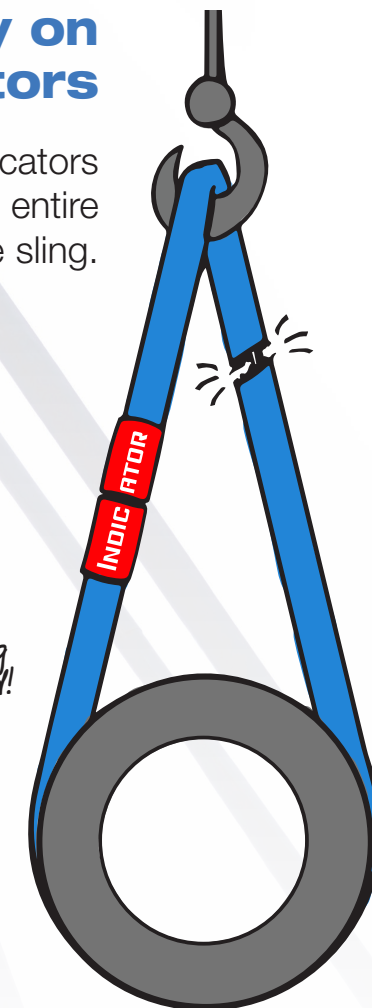
Hey Boss, we just received this sling back from inspection, I put it up on crane, and pre-failure warnings have failed again. What should I do?

You can't use it, put the sling in the barrel with the others.



## NEVER rely only on overload indicators

Even with overload indicators you must inspect the entire length of the sling.



## Meets ASME B30.9 standard!

ASME B30.9 states inspection MUST be done on the entire length of the sling!

